

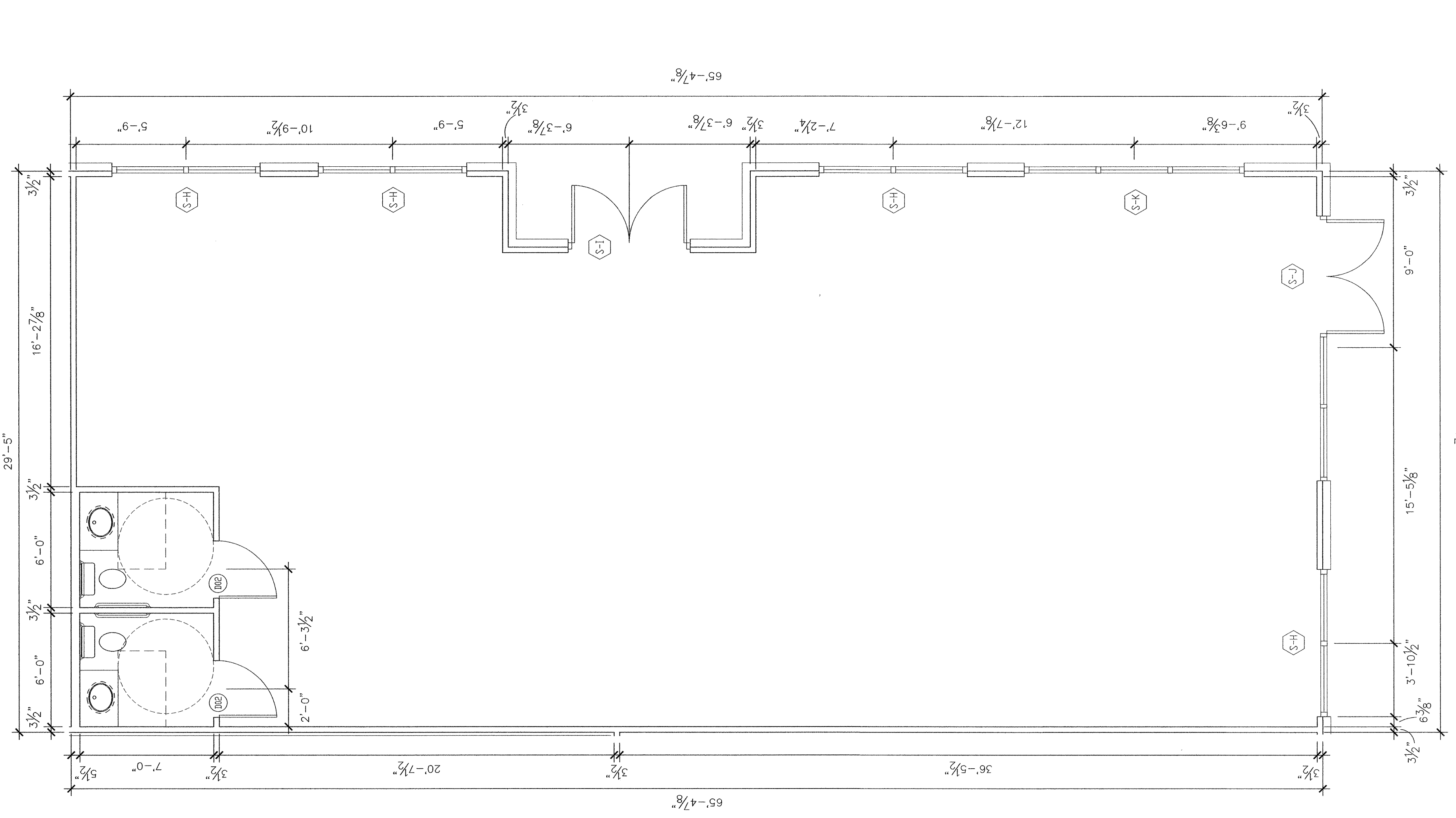
DATE	7/11/06	PRINTED
DATE	7/25/06	PRICING SET 1
DATE	9/22/06	CONSTRUCTION SET 1

NOTE: All drawings, specifications and other work products of Gary B. Coursey & Associates Architects Inc. for this project are instruments of service for the project only and shall remain the property of Gary B. Coursey & Associates Architects Inc. whether this project is completed or not. Copyright as of date of drawings.

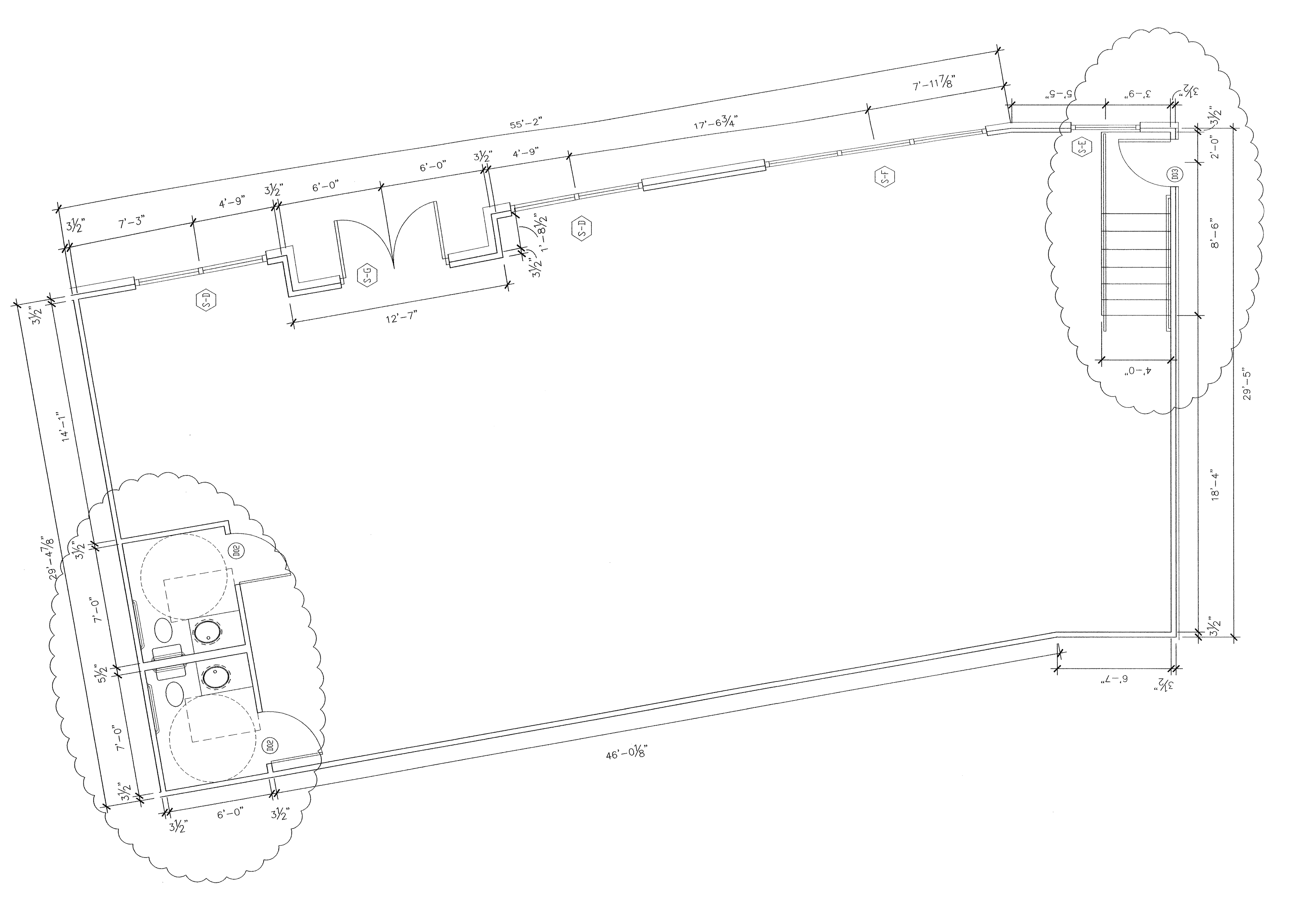
DATE: JULY 25, 2006
 COMMISSION #: 2006-10
 DRAWN BY: A HOWARD
 CHECKED BY: G COURSEY

ATHENS MIXED-USE
 ATHENS, GEORGIA
 PERENNIAL PROPERTIES
 AARON GOLDMAN
 TIM SCHRAGER
 1924 PIEDMONT CIRCLE, NE
 ATLANTA, GEORGIA 30324
 404-881-0766

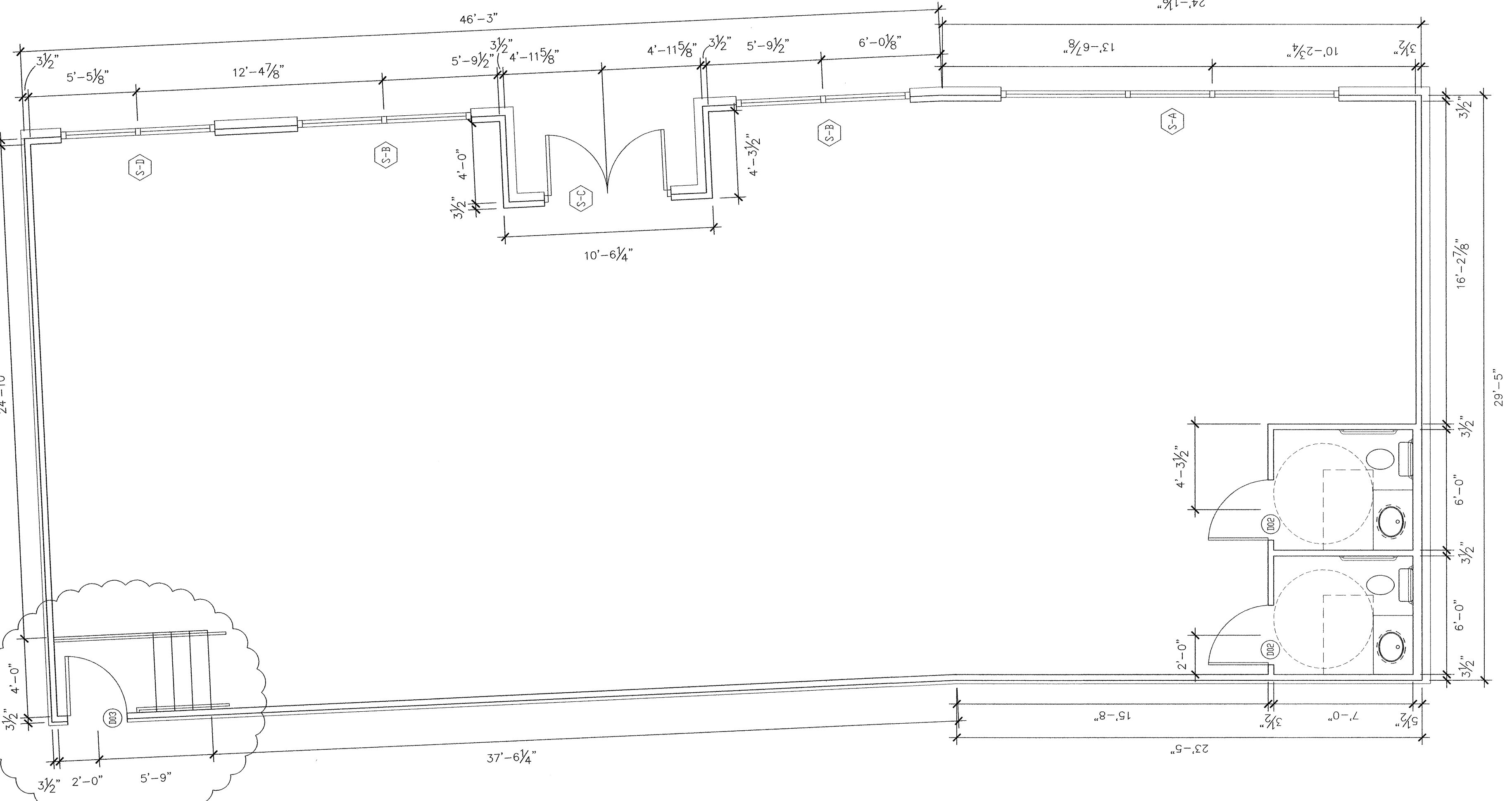
RETAIL UNITS
 A9.3
 SHEET



RETAIL "A" PLAN
 1/4" = 1'

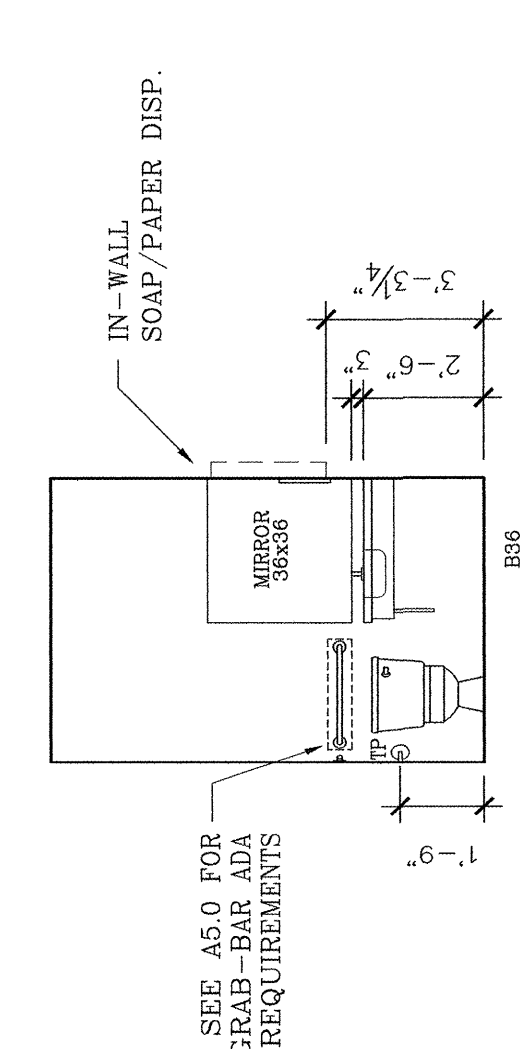
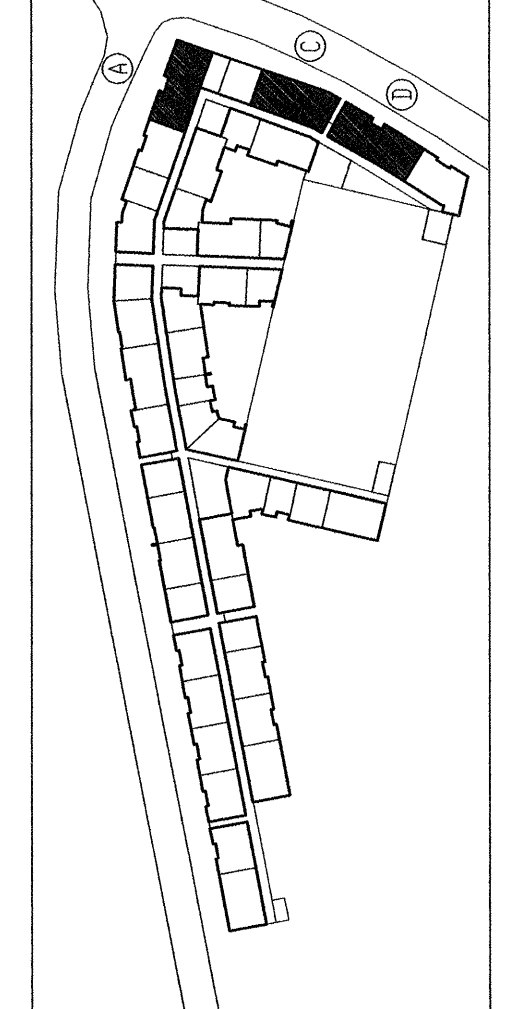


RETAIL "C" PLAN
 1/4" = 1'



RETAIL "D" PLAN
 1/4" = 1'

RETAIL	2068 SF	TOTAL AREA	5844 SF
RETAIL D	1898 SF		
RETAIL C	1400 SF		
RETAIL A	1928 SF		

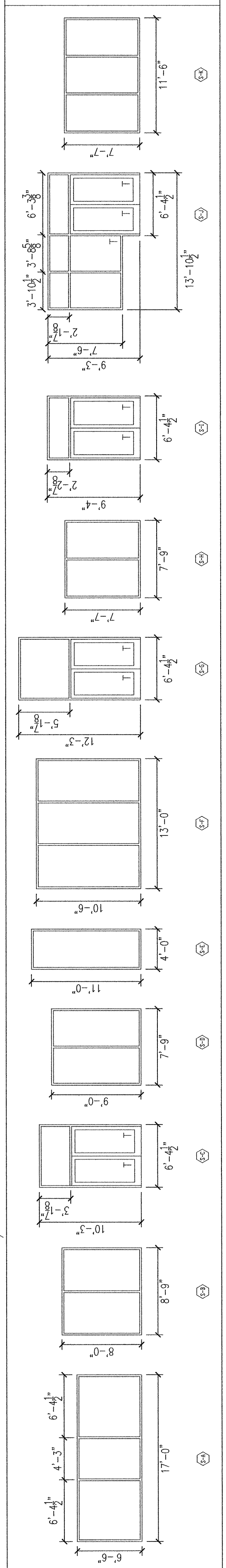


RESTROOM ELEV. (TYP.)
 1/4" = 1'

NOTES: STORE-FRONT WINDOWS AND DOOR SYSTEMS
 - TYPICAL STORE-FRONT MULLIONS ARE 2-1/4" WIDE AND 4-1/2" DEEP.
 - MULTIPLE WINDOWS WITHIN A SET ARE CONSIDERED TO BE OF EQUAL WIDTH UNLESS OTHERWISE NOTED.
 - GLAZING MUST BE 18" ABOVE ALL SURROUNDING WALKING SURFACES. IF GLASS IS LESS THAN 18" ABOVE WALKING SURFACE, IT MUST BE TEMPERED.
 - GLAZING MUST BE TEMPERED IF WITHIN 2' OF ANY DOOR AND/OR LESS THAN 60" FROM THE GROUND.
 - ALL GLAZING IN DOORS MUST BE TEMPERED.

DOOR SCHEDULE	DOOR NUMBER	DESCRIPTION	DOOR	SIZE	TYPE	THK.	MATERIAL	FINISH	FIRE RATING	FRAME	MATERIAL	FINISH	HARDWARE SET	HEAD DETAIL	JAMB DETAIL	SILL DETAIL	REMARKS
RETAIL D	(D)	INTERIOR	3'-0" x 6'-8"	1-3/8"	HOLLOW-CORE	PAINT	WOOD	PAINT									
RETAIL C	(C)	EXTERIOR	3'-0" x 6'-8"	1-3/4"	HOLLOW-CORE	PAINT	WOOD	PAINT									
RETAIL A	(A)	EXTERIOR	3'-0" x 6'-8"	1-3/4"	METAL	PAINT	METAL	PAINT									
	(B)	INTERIOR	3'-0" x 6'-8"	1-3/8"	HOLLOW-CORE	PAINT	WOOD	PAINT									

STOREFRONT WINDOW/DOOR SYSTEMS



SEE BUILDING PLANS FOR VARYING FIRE-RATED CONDITIONS